

KATO

KATO

KA-1300RX

KA-1300RX

Full Spec. Catalog

FULLY HYDRAULIC
ALL TERRAIN CRANE

50°

40°

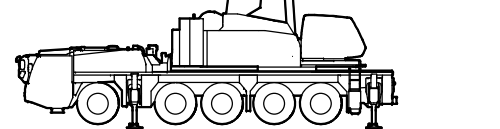
30°

20°

10°

性能表カワロフ

C04182



* KATO products and specifications are subject to improvements and changes without notice.

Address inquiries to:

KATO
KATO WORKS CO.,LTD.

9-37, Higashi-ohi 1-chome, Shinagawa-ku, Tokyo, 140-0011, Japan
Tel. : Head Office Tokyo (03) 3458-1111
Overseas Marketing Department, Tokyo (03) 3458-1115
Fax. : Tokyo (03) 3458-1163
URL <http://www.kato-works.co.jp>

C04182
2.2022-PDF (TI) 2

C04182

【SPECIFICATION】

■CRANE Specification

Description	KATO FULLY HYDRAULIC ALL TERRAIN CRANE	
Model	KA-1300RX	
Maximum lifting capacity	130ton × 2.5m	
Boom length	11.8m — 52.0m (6 section)	
SL jib length	9.2m—26.6m (4 section)	
Hoisting line speed (winch up)	Main winch	115m / min. (at 4th layer)
	Auxiliary winch	115m / min. (at 4th layer)
Hoisting hook speed (winch up)	Main winch	(Parts of line; 19) : 6m / min. (at 4th layer)
	Auxiliary winch	(Parts of line; 1) : 115m / min. (at 4th layer)
Boom derricking angle	-1.8° — 85°	
Boom derricking time	70s / -1.8° — 85°	
Boom extending speed	40.2m / 158s	
Slewing speed	High	1.8min ⁻¹
	Low	0.95min ⁻¹
Speed / Time	Subject to no load	

●Equipment and structure

Winch system Main & Auxiliary winches	Driven by axial plunger type hoisting motor through planetary gear reduction. Controlled independently by respective operating lever. Equipped with automatic brake.	
Counterweight	8.5ton, 16ton, 24ton Hydraulic removal system	
Outriggers	Type	Hydraulic H-beam type (2section)
	Extension width	8,400mm (Fully extended)
		7,400mm (Intermediately extended)
		6,400mm (Intermediately extended)
		5,400mm (Intermediately extended)
		4,400mm (Intermediately extended)
Wire rope for hoisting	Main winch	Diameter: 20mm × Length: 280m
	Auxiliary winch	Diameter: 20mm × Length: 170m

●Engine

Maker	Daimler
Model	OM906LA (EU Stage 3A)
Type	4 cycle, 6 cylinders, water cooled, direct injection turbo-charged diesel engine with intercooling
Piston displacement	6.37L
Max. power	150kW at 2200min ⁻¹
Max. torque	750N·m at 1200min ⁻¹
Electric system	24V
Batteries	(12V-120Ah) × 2
Fuel tank capacity	250L

●Hydraulic system

Oil pump	Double variable axial plunger pump and 2 gear pumps	
Hydraulic motor	Hoisting motor	Axial plunger type
	Slewing motor	Axial plunger type
Control valve	Double acting with integral check and relief valves	
Cylinder	Double acting type	
Oil reservoir capacity	1115L	

●Safety devices

	ACS (Automatic Crane System with voice alarm), Working range limit mode, Outrigger status detector, Boom derricking / telescoping holding valve, Overhoist prevention device, Drum lock device, Winch holding valve, Automatic winch brake, Winch drum rope tension roller, Outrigger lock pins, Outrigger reaction force warning device, Electronic horizontal detector, Slewing lock, Slewing brake, Hydraulic safety valves, Side mirror, Winch drum turning indication device, Engine oil pressure warning device, Battery charge warning device, Coolant temperature warning device, Coolant level warning device, Fuel level warning device, Hydraulic oil return filter warning device, Hydraulic oil temperature warning device, ACS outside indicator (LED), Stanchion on boom, Slewing warning lamp, Left rear view camera
--	--

●Operator's cab

	All steel welded construction, 1 person, Rubber mounted, Tilttable (approx.15°), Air conditioner, Accessory socket (24V), USB socket (output 5V-2.4A x 2), Front windscreen wiper & washer, Roof window wiper & washer, Step lamp (LED), AM/FM Radio, Floor mat, Foot lamp, Power Window (external closing switch), Sun visor, Fire extinguisher
--	--

●Standard equipment

	Boom dismount device, Slewing upper structure dismount device, Hydraulic oil cooler, Working light (on table and cab) (LED), Searchlight, Working light for dismounting and setting, Winch view camera, PA system, Anemometer, Side view camera, Hook for 130 / 70 ton, Hook for 50 ton, Hook for 7.8 ton, Wire rope to dismount counterweight
--	--

●Optional equipment

	Tea table, Wire rope to dismount various things, Spark arrester, Slewing warning buzzer, Yellow rev. light, Ash tray, Jib stand, Stanchion on boom tip, Counterweight view camera, Sub hook sheave for 130 ton, Code guide for crane camera
--	---

■CARRIER Specification

Maker	KATO
Model	KA5161
●Carrier Specification (Only carrier)	
Maximum traveling speed	75km/h
Grade ability (tan θ)	0.60 (computed at G.V.W. = 36,620kg)
Minimum turning radius	10.5m

●General dimensions (Only carrier)

Overall length		13,390mm
Overall width		2,990mm
Overall height		2,880mm
Wheel base		2,850+1,650+1,850+1,650=8,000mm
Treads	Front	2,500mm
	Rear	2,500mm
Gross vehicle weight		36,620kg
Front axle		17,380kg (1 st and 2 nd Axles)
Rear axle		19,240kg (3 rd , 4 th and 5 th Axles)

●General dimensions (Fully equipped)

Overall length	15,400mm
Overall width	2,990mm
Overall height	4,000mm

●Engine

Maker	Daimler	
Model	OM471LA (EU Stage 4)	
Type	4 cycle, 6 cylinders, water cooled, direct Injection turbo-charged diesel engine with intercooling	
Piston displacement	12.808L	
Max. power	390kW at 1,700min ⁻¹	
Max. torque	2,460N·m at 1,300min ⁻¹	
Torque converter	Engine mounted 3 elements 1 stage (with lock up clutch)	
Transmission	Remote mounted full automatic 6 forward & 1 reverse speed	
Axles	All axles steered 1 st , 2 nd , 4 th and 5 th axles driven and have planetary gears reduction and differential lock Inter-axle differential lock on 4 th axle	
Suspension	Hydro-pneumatic suspension Hydraulic locking device with suspension cylinder	
Brake system	Service brake	2 circuit brake 10 wheels servo-air brake, all axles are equipped with disc brakes
	Parking brake	Spring applied, electrically air released parking brake (2 nd , 3 rd , 4 th and 5 th Axles)
	Auxiliary brake	Engine brake (Compression brake), Exhaust brake, Hydraulic retarder
Steering	Semi-integral hydraulic power steering of front two axles and automatic steering of the 3 rd , 4 th and 5 th axles	
Tire size	10 tires, 445 / 95 R25 177E ROAD	
Electric system	24V	
Batteries	(12V-170Ah) × 2	
Fuel tank capacity	500L	
Urea tank capacity	40L	
Driver's cab	All steel welded construction, 2 persons	

●Safety devices

	Emergency steering device, Engine over speed alarm, Three-point seat belt (Driver), Suspension lock, Electric adjustable side mirrors, Warning reflector, Engine management & warning system, Transmission management & warning system, Radiator coolant level warning device, Low air warning device, Rear view camera, Left rear view camera, Brake wear indicator, Seat belt reminder
--	--

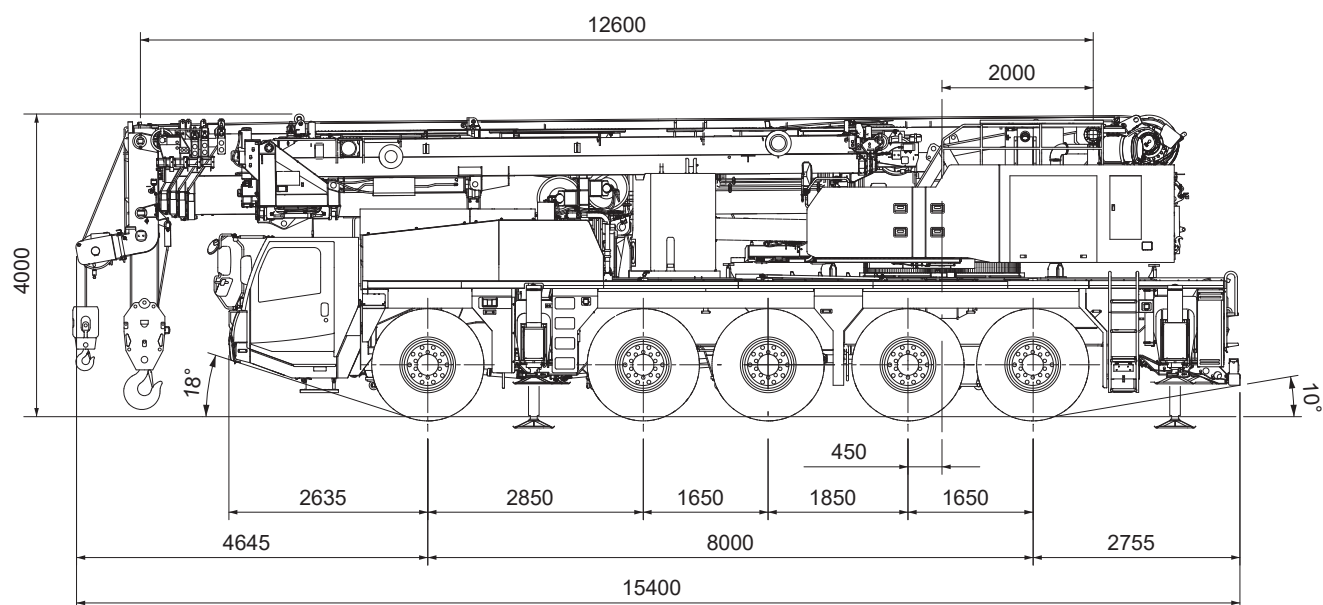
●Standard equipment

	Adjustable steering wheel, Air conditioner, Power Window, Adjustable suspension seat, Tachograph, Sun visor, Centralized lubricating system, Air dryer, AM/FM Radio, Towing hook (front and rear, eye type), LED head lamp, Day time running light, Retractable bed, Fire extinguisher
--	--

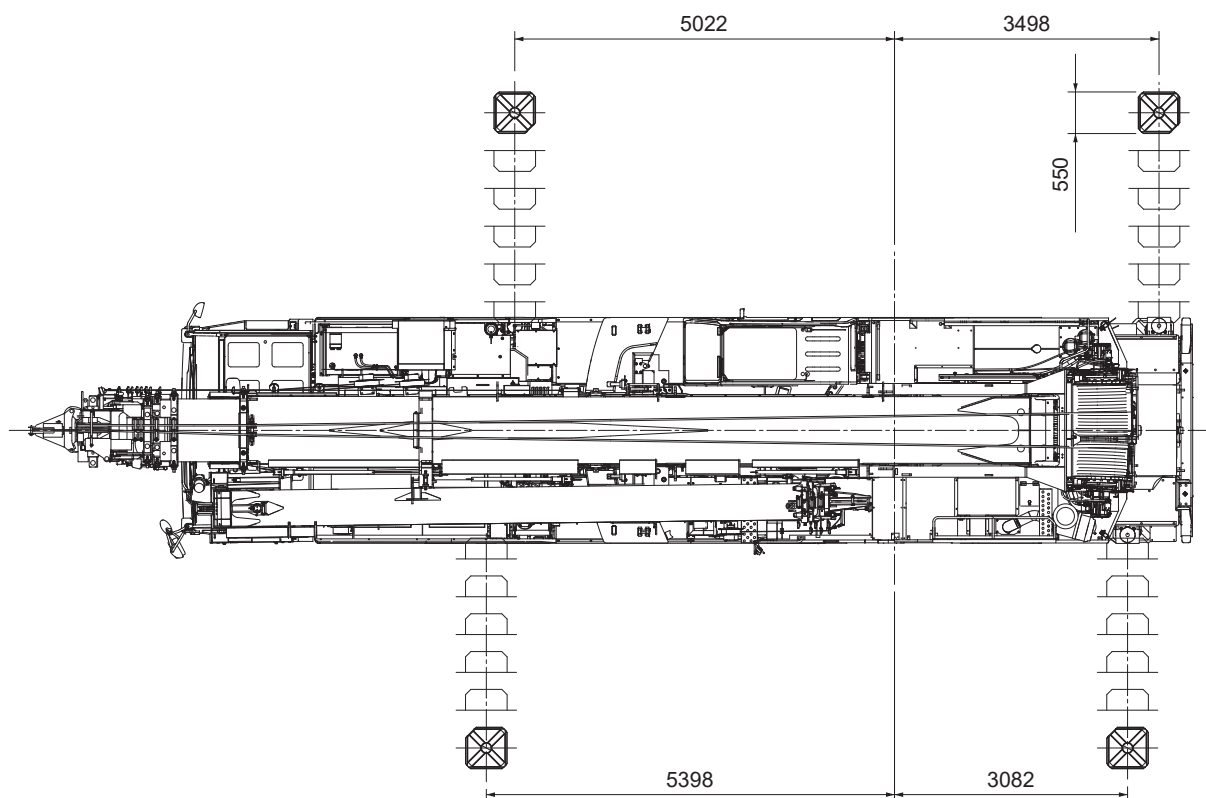
●Optional equipments

	Air heater, Yellow rev.light, Door visor, Right rear view camera, Urea tank cap with key, Greasy-free drive shaft
--	---

Overall view

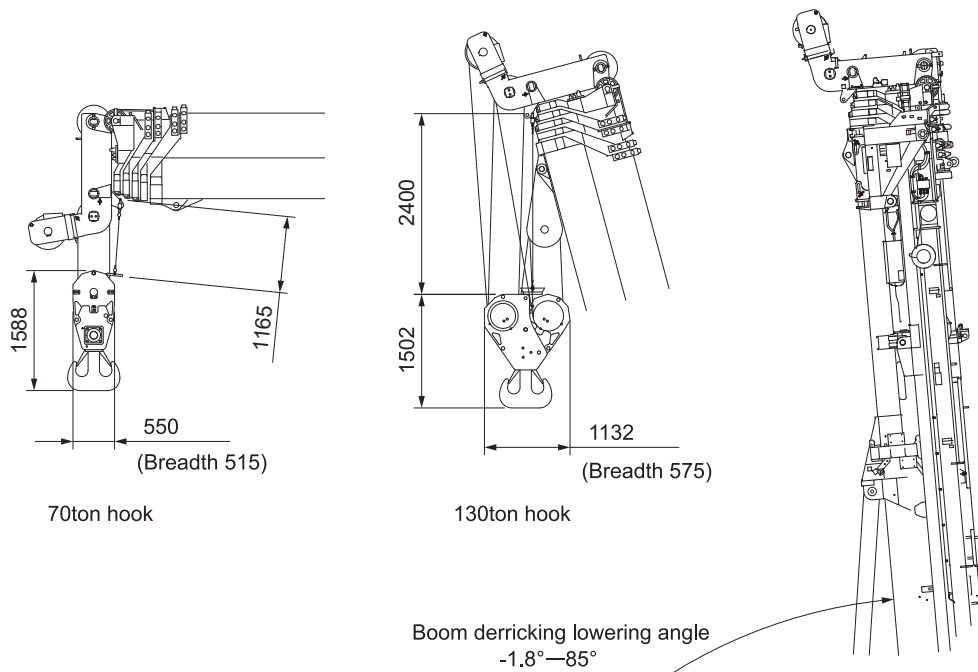
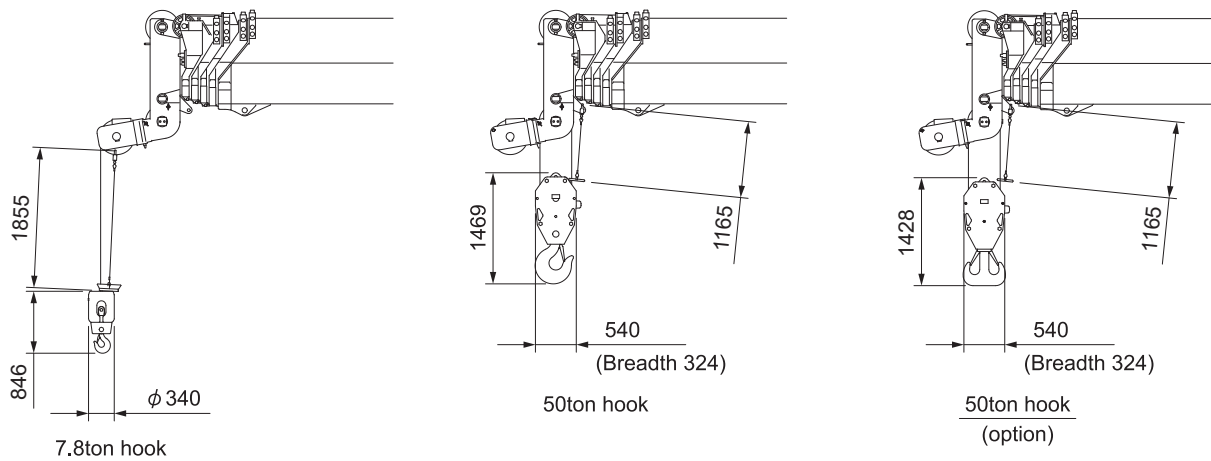


* Work site driving position
(with 16t counterweight mounted)



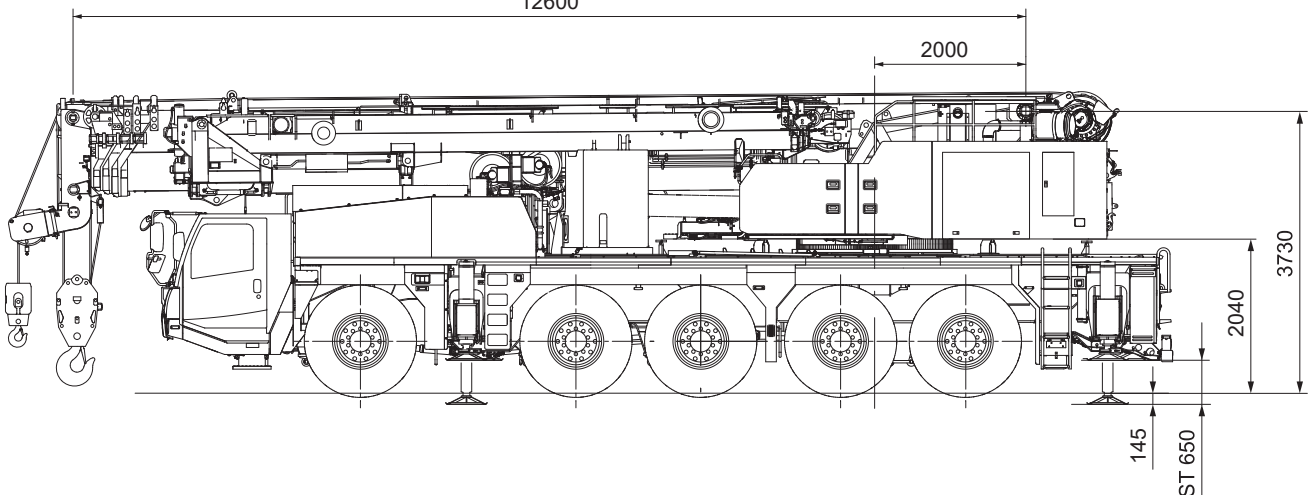
Reduced scale: 1/100 unit (mm)

Overall view



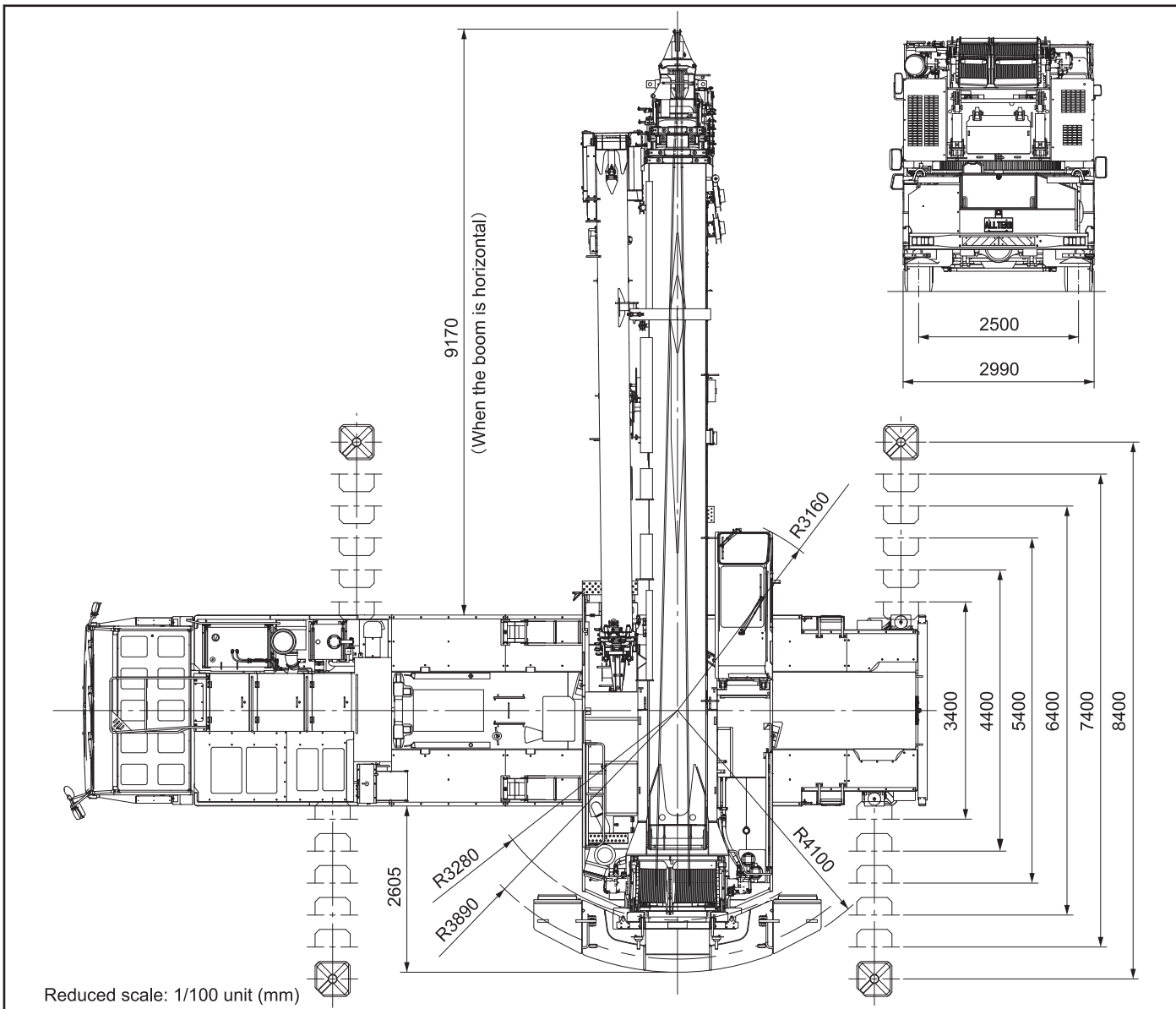
Min. 11800 Max. 52000
Stroke 40200

12600

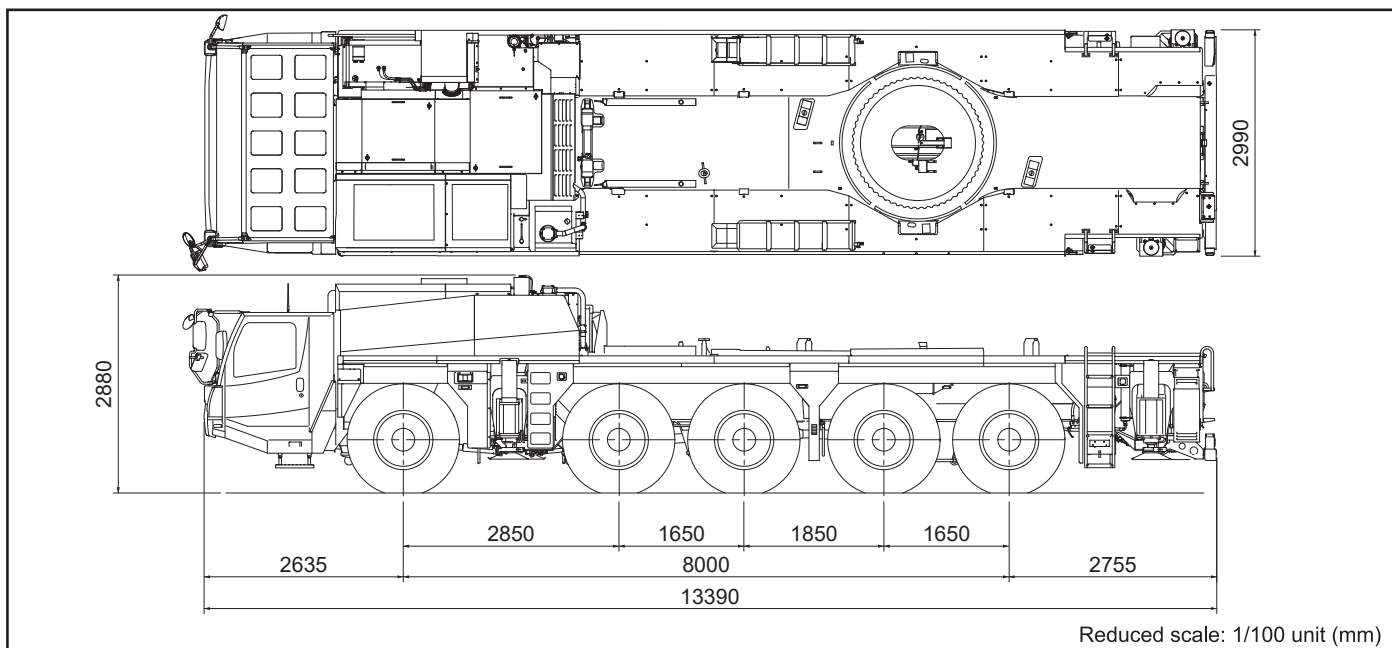


Reduced scale: 1/100 unit (mm)

Overall view

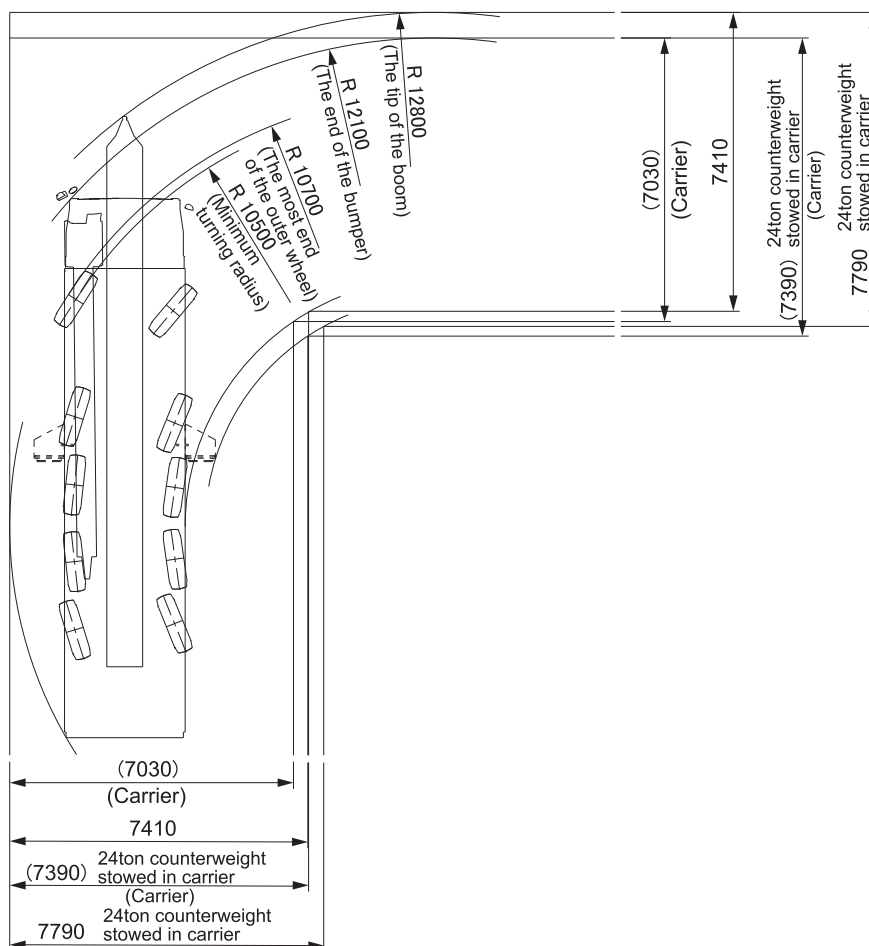


Public road driving conditions



■ Minimum right-angle passage width for machine with Jib

● When driving within work site



● When driving within work site (Special steering)

